



July 2018

University of Georgia

Volume 1, Issue 4

### Special points of interest:

- Bermudagrass Stem Maggot (BSM)
- SE Hay Contest
- August Hay Day
- Upcoming Programs

### Inside this issue:

BSM	1
SE Hay Contest	1
August Hay Day	2
Upcoming Events	2
Calendar of Events	3
Ag Comic of the Month	4

## Bermudagrass Stem Maggot (BSM)

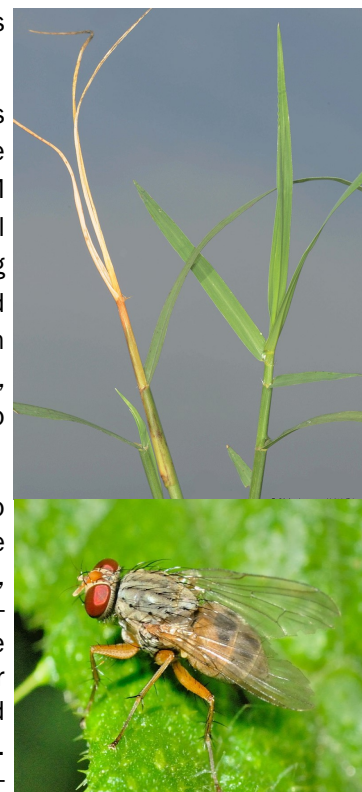
The Bermudagrass Stem Maggot (BSM) was first discovered in southern Georgia in 2010. Since then it has spread throughout the Southeast, damaging bermudagrass hayfields, pastures and turf grass as far north as North Carolina and as far west as Texas. It is believed to have originated in Southeast Asia.

Identification of BSM damage appears as a “bronzing” of hay fields, generating damage similar to that of severe drought- or frost-damage. The bronzing is the result of chlorosis and necrosis in the top two to three leaves of the plant. The damaged leaves can easily be pulled from the sheath, and the end inside the sheath

should show evidence of insect damage or obvious decay.

There are some varieties of bermudagrass that are more susceptible to BSM damage than others but all has the possibility of being hit by the pest. A hayfield or pasture that has been damaged by BSM before, is highly susceptible to being damaged again.

This is the time of year to start noticing BSM damage in fields. On June 25, 2018 an Alicia Bermudagrass hayfield in Monroe County, on the Lamar county line, was identified with having BSM damage. Keep an eye out for damage in your bermudagrass and notify your County Extension Office if you see any.



## Southeastern Hay Contest

It’s that time of year again! Time to start pulling samples for the **Southeastern Hay Contest**.

Samples submitted to the SE Hay Contest must be pulled with the County Extension Agent Present.

Please call the Upson County Extension office to

set up a time to get your samples pulled by Friday, September 14, 2018.

It costs \$25 to submit each sample into the contest. That covers contest registration, as well as postage.

The description to the hay contest can be found at the link provided. The link can

also be found on both Upson and Lamar County’s websites.

If you have any questions feel free to call the Extension Office, or email Hailey Robinson at:

[hrobinson@uga.edu](mailto:hrobinson@uga.edu)

Contest Link:  
<https://site.caes.uga.edu/sehaycontest/>



**“Do what you can, with what you have, where you are.”**

**—Theodore Roosevelt**



## August Hay Day

On **August 29, 2018** UGA Extension will be hosting a Hay Day in Lamar County.

The event will begin at 9:30am with registration and will kick-start at 10am. The day will be separated into two sections.

The morning portion will be devoted to education. Dr. Patrick McCullough from the University of Georgia, Griffin Campus will be giving a presentation over “Problem weed control in hayfields.” Attendees to this portion will receive one hour of pesticide credit, private or commercial. Next, Mrs. Carmen Westerfield from the

USDA’s Natural Resources Conservation Service will be presenting on what they do and current programs. We will then finish the morning portion with a presentation from Dr. Dennis Hancock over current hayfield management practices and winter grazing strategies.

Lunch will break up our morning and afternoon sections of the event.

The afternoon will consist of hayfield equipment demonstrations and agricultural vendor booths.

This is a no charge event, our goal is for this day to be beneficial not only for the vendors and equip-

ment dealers, but for all the producers and individuals attending.

There is a flyer that will be sent thorough email, in the mail, on our Facebook page and is published on our Upson and Lamar County websites.

If you are not on our email and mailing list, or are not sure if you are let the office secretaries know.

Please **RSVP by August 22, 2018** for the event to either Upson or Lamar County Extension Offices. We hope to see you out there!

## Upcoming Events

July 10th and 24th, Spalding County is doing a **preservation series**. If you are interested in attending either of those, please contact the Spalding County Extension Office.

**(770) 467-4225**

Friday July 13, 2018 is **Summer AGvacation**. This event will be hosted by Upson/Pike/Lamar Farm Bureaus, Upson/Pike/Lamar Extension Offices and Upson/Pike FFA. It is a one day event for kids ages 8-15 to come and learn about the facets of agriculture. There will be 6 stations focusing on careers in agriculture. If you have

any questions or still want to register, please contact your Farm Bureau or County Extension Office.

The **MGCA Picnic** is on July 21, 2018 at the Pippins Lake House. Arrive after 5pm, dinner will be served at 6:30pm. The association will be making the main course but please bring a side dish or dessert to share. This event is for all MGCA families and interested future members. The Pippins invite everyone to bring out there fishing poles and bait. RSVP by July 18, 2018 online at:

**[mgcaonline.com](http://mgcaonline.com)**

The **Turf Grass Field Day** will be August 9, 2018 at the UGA Griffin Campus. Register before July 17th for a discounted rate.

**[www.GeorgiaTurf.com](http://www.GeorgiaTurf.com)**

We are having another **Lunch ‘N Learn** on August 20th at the Barnesville-Lamar County Library. The topic will be Shopping and cooking healthy meals on a budget. It will be from 10:30a-12:30p. It costs \$5 to attend and lunch will be provided. Please RSVP to the Lamar County Extension Office by 5pm on Thursday August 16, 2018.

**(770)358-5163**

# July 2018

Sun	Mon	Tue	Wed	Thu	Fri	Sat
1	2	3	4 Independence Day	5	6	7
8	9	10 Kids Can: Preserve Food (Spalding)	11	12	13 Summer AGvacation (Upson)	14
15	16	17	18	19	20	21 MGCA Picnic (Lamar)
22	23	24 Summer Garden Preservation (Spalding)	25	26	27	28
29	30	31				

# August 2018

Sun	Mon	Tue	Wed	Thu	Fri	Sat
			1 Pike County ANR Agent Starts	2	3	4
5	6	7	8	9 Turf Grass Field Day (Griffin)	10	11
12	13	14	15	16	17	18
19	20 Lunch 'N Learn 10:30a-12:30p (Lamar)	21	22	23	24	25
26	27	28	29 Hay Day 10a-3p (County Line Farm)	30	31	

Upson/Lamar Extension  
University of Georgia

Upson County Extension  
305 S. Hightower St.  
Suite 170  
Thomaston, GA 30286  
**(706) 647-8989**

Lamar County Extension  
118 Academy Drive  
Suite A  
Barnesville, GA 30204  
**(770) 358-5163**

E-mail: [hrobinson@uga.edu](mailto:hrobinson@uga.edu)



## What is UGA Extension?

Through county offices throughout the state, University of Georgia Cooperative Extension offers reliable information and programs in the areas of agriculture, food, families, the environment and 4-H youth development. Let us help you learn, grow and do more!

<http://extension.uga.edu/county-offices/upson.html>  
or  
<http://extension.uga.edu/county-offices/lamar.html>

Follow us on Facebook!!! <https://www.facebook.com/upsonlamarextension/>

## AG Comic of the Month

