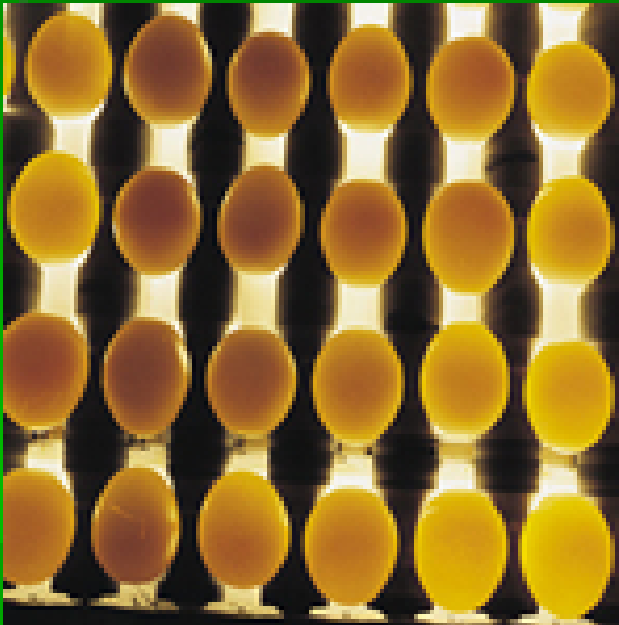


Poultry Judging Interior Egg Quality

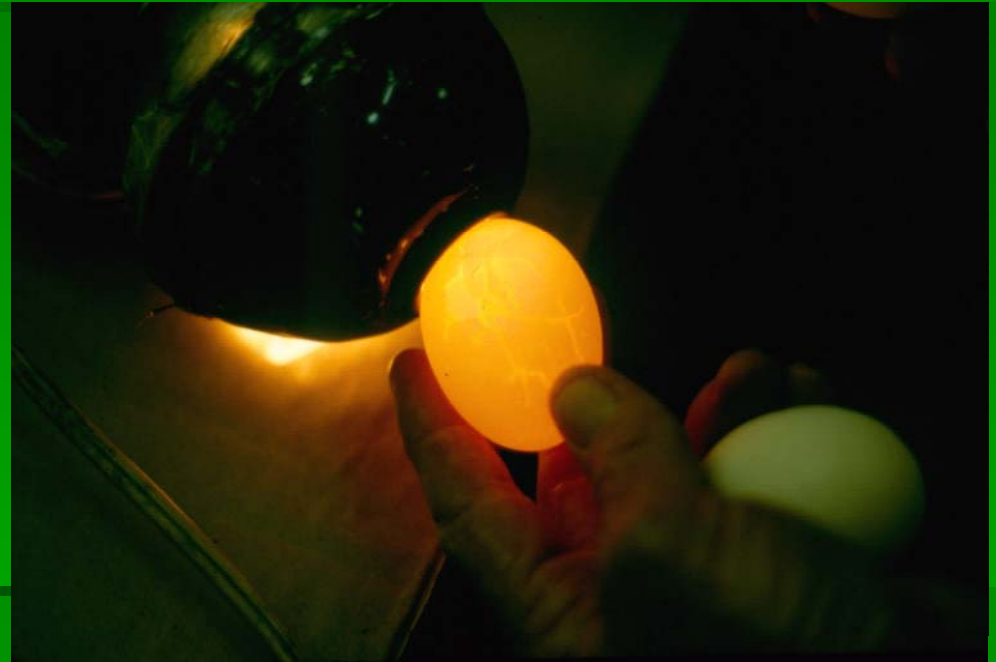


Created by Connie Page
Emanuel County Extension Agent
P.O. Box 770
129 N. Anderson Drive
Swainsboro, GA 30401
478-237-1226 FAX 478-237-8451
conniep@uga.edu
April, 2006

Interior Quality – Candling



On Egg Farms



In 4-H Judging Contest

Hold only ONE egg at the time

Candling

- Hold small end of egg with thumb, index, and middle fingers
- Put large end of egg against candler at a 45 degree angle
- Carefully rotate egg
- Look for blood / meat spots
- Check size of air cell, yolk shadow

Interior Egg Quality

- Graded as AA, A, B, and inedible
- Size of Air Cell is generally most important when there is no blood/meat spot
- Yolk Shadow Outline – determined by albumen thickness
- Size and Shape of Yolk

Interior Quality – Air Cell

- Smaller = Higher Quality

FORM PY-35 (5-1-74)

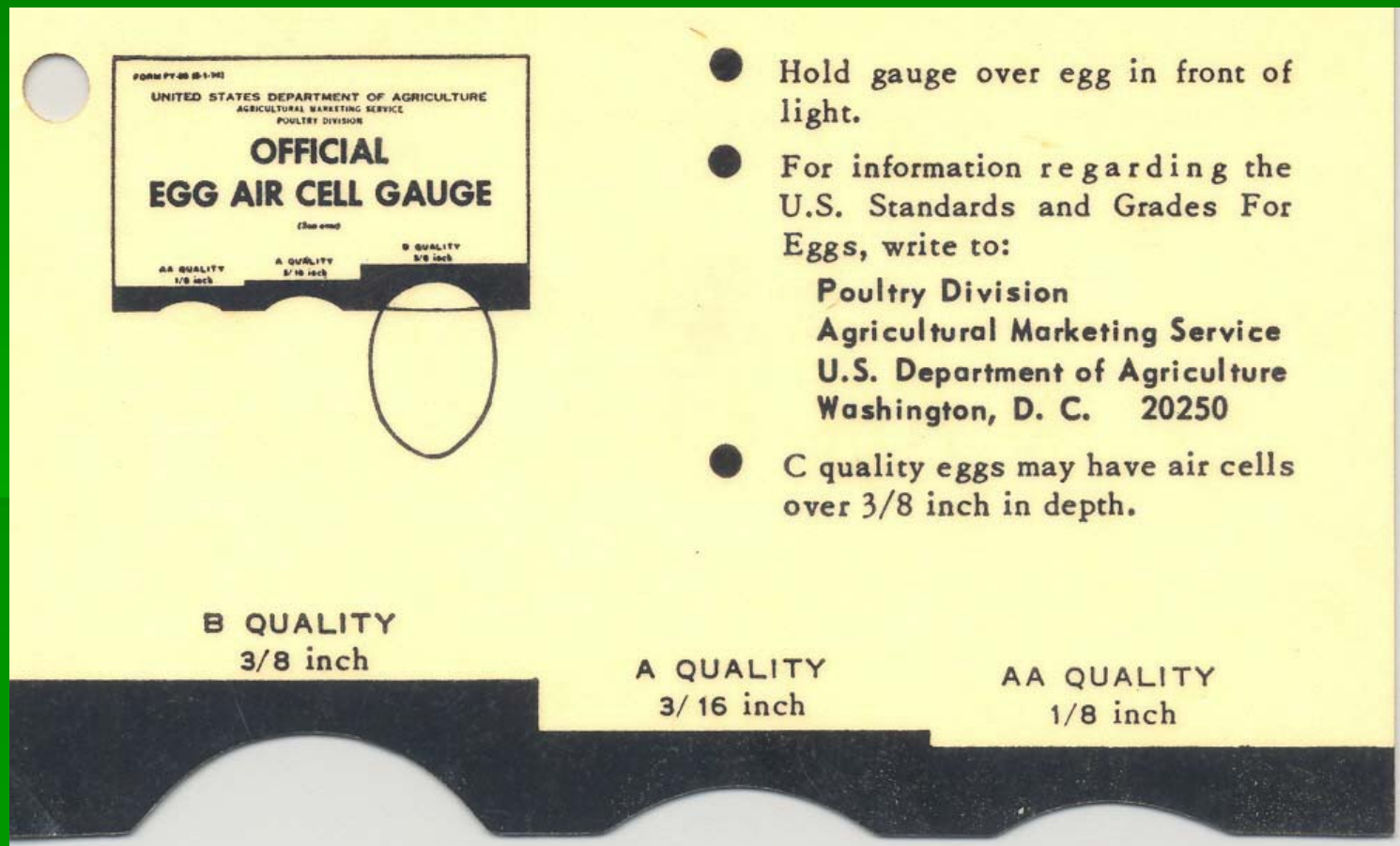
UNITED STATES DEPARTMENT OF AGRICULTURE
AGRICULTURAL MARKETING SERVICE
POULTRY DIVISION

**OFFICIAL
EGG AIR CELL GAUGE**

(See over)

AA QUALITY 1/8 inch	A QUALITY 3/16 inch	B QUALITY 3/8 inch
------------------------	------------------------	-----------------------

- AA - Air Cell is 1/8 inch deep (bottom left)
- A - Air Cell is 3/16 inch deep (bottom center)
- B - Air Cell is 3/8 inch deep (bottom right)



Interior Quality – Yolk Shadow

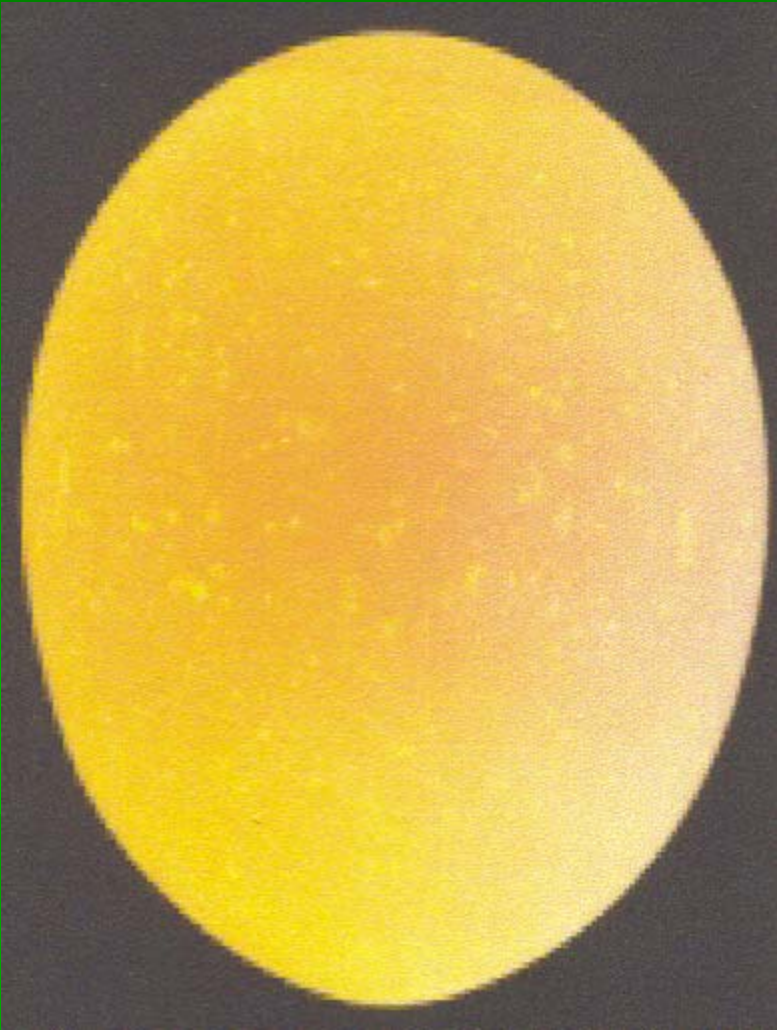
- If the albumen is thick, the shadow of the yolk will be harder to see.

AA Quality = Outline slightly defined

A Quality = Outline fairly well defined

B Quality = Outline plainly visible

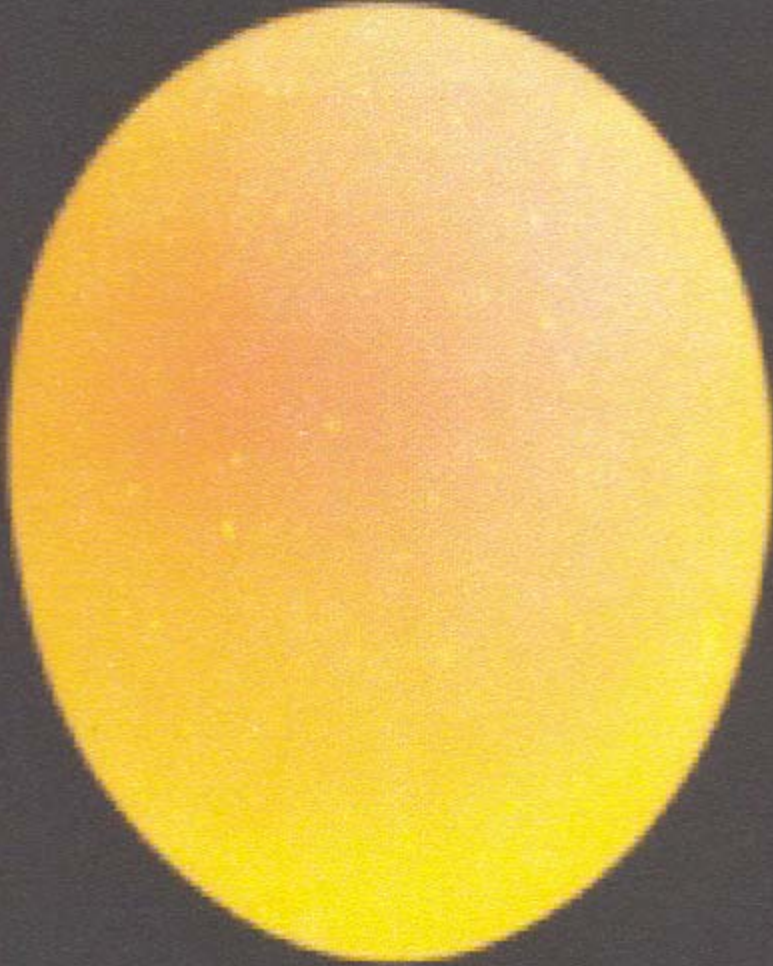
AA Quality



- Air Cell = 1/8 inch
 - Yolk Shadow = Slightly defined
-

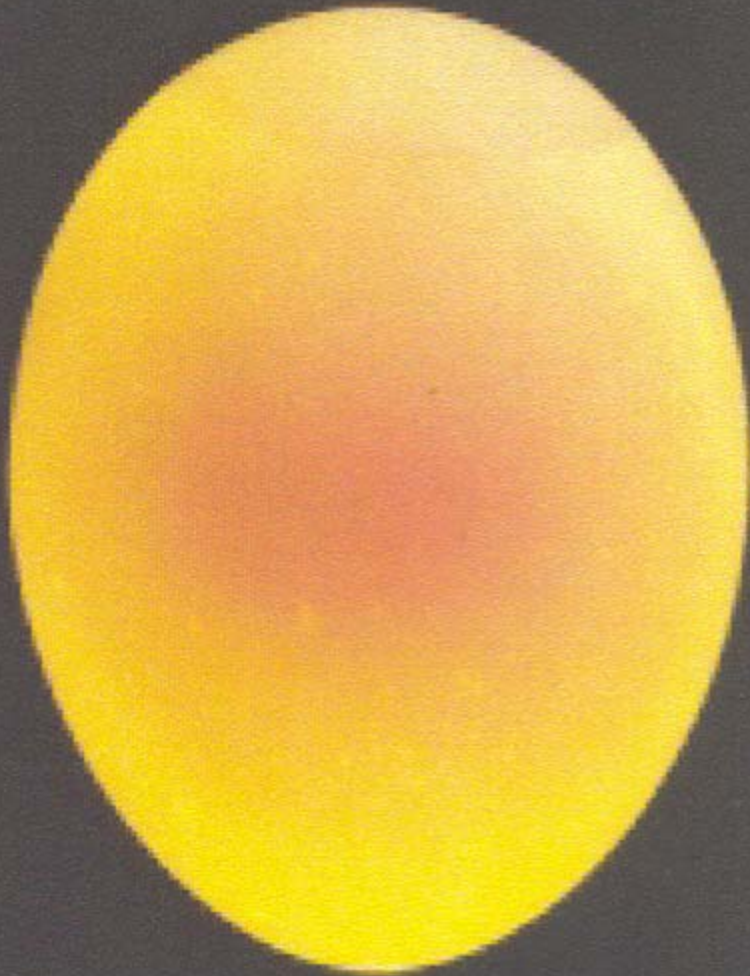
A Quality

- Air Cell = 3/16 inch
 - Yolk Shadow = Fairly-well defined
-

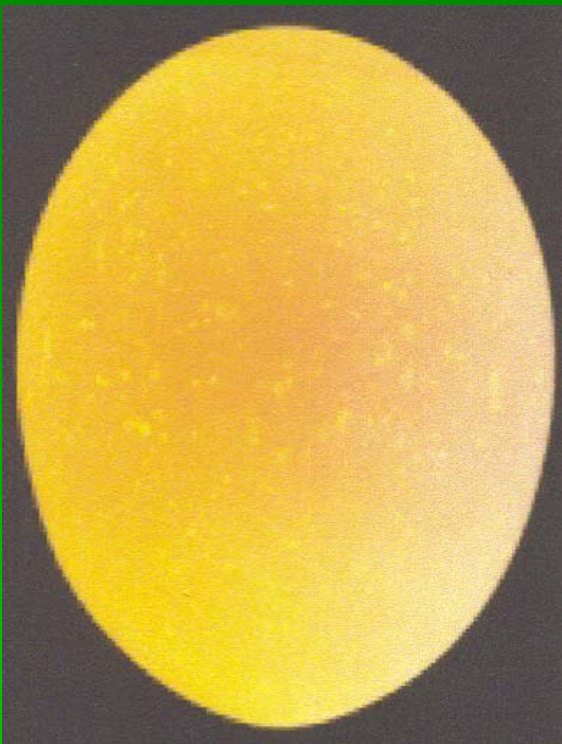


B Quality

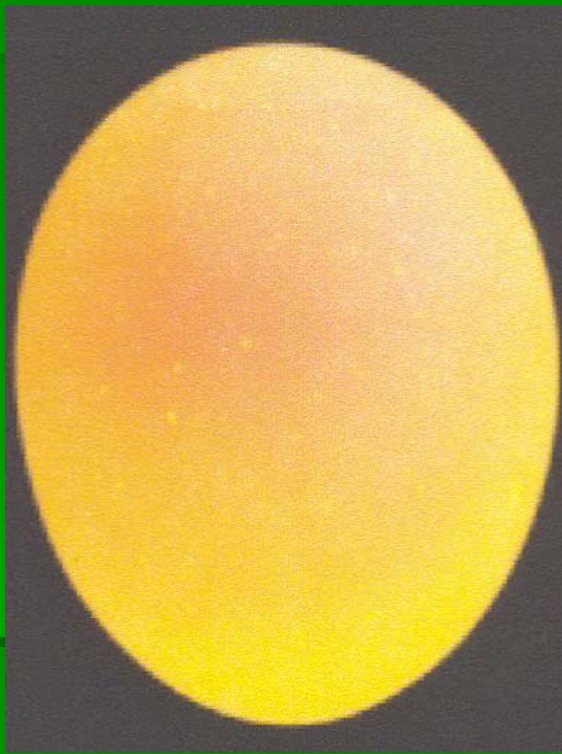
- Air Cell = 3/8 inch
 - Yolk Shadow = Plainly Visible
-



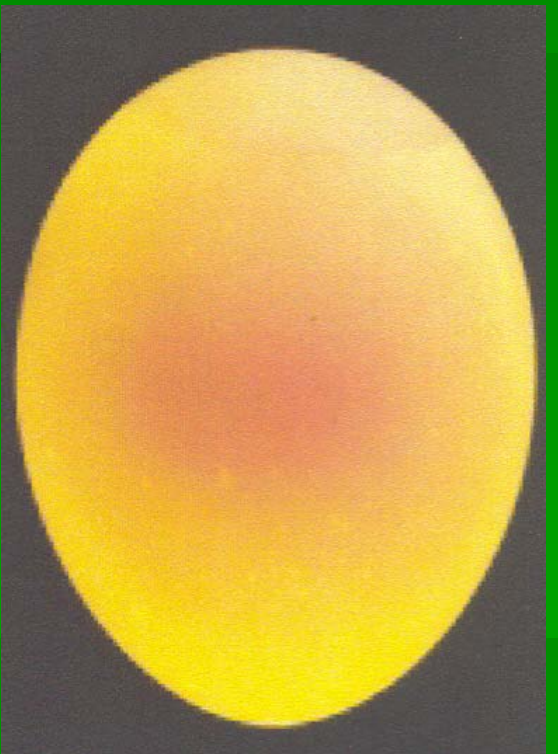
Side by Side Comparison



AA



A



B

Interior Quality – Scorecard

CLASS I – CANDLING

Contestant's Number _____ **9**

Egg No.	Quality				Score
	AA	A	B	Inedible	
1					
2					
3					
4					
5					
6					
7					
8					
9					
10					
11					
12					

Score _____

- Numbers run vertically
- Find the correct quality grade
- Place check in the row underneath the grade you choose
- Be sure that you do not have two checks in the same row

Practice



Grade = Inedible

Practice



Grade = AA

Practice



Grade = AA

Practice



Grade = A

Practice



Grade = Inedible

Practice



Grade = B

Practice



Grade = Inedible

Practice



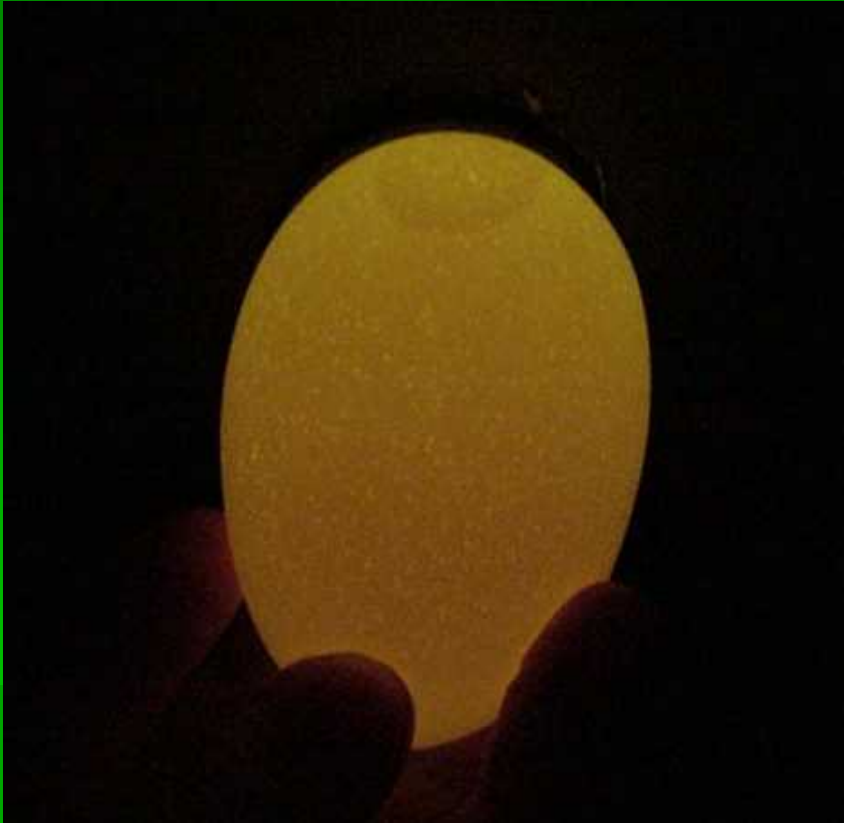
Grade = A

Practice



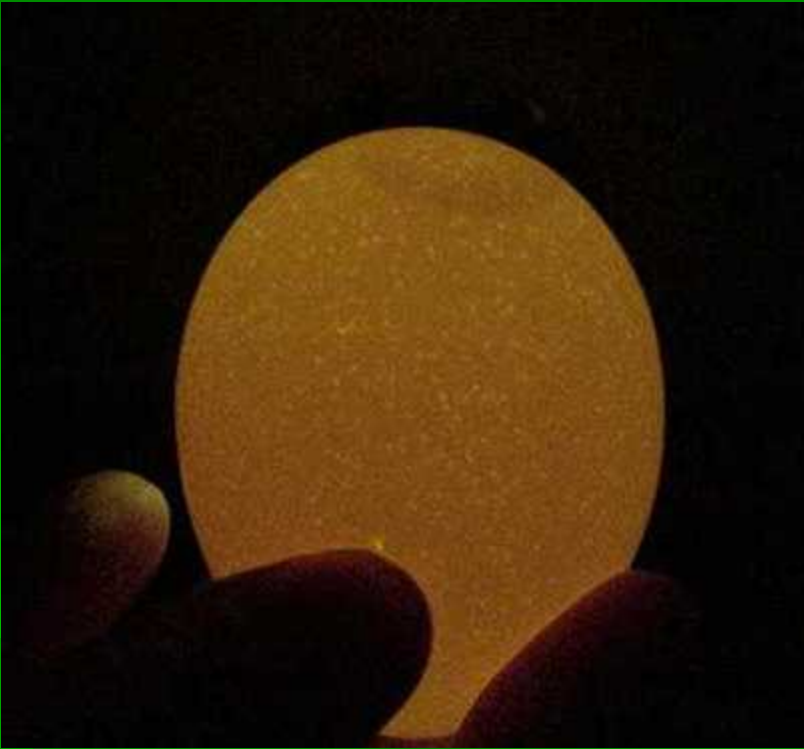
Grade = B

Practice



Grade = AA

Practice



Grade = AA

Practice



Grade = B

Interior Quality – Scorecard

CLASS I – CANDLING

9

Contestant's Number _____

Egg No.	Quality				Score
	AA	A	B	Inedible	
1				X	
2	X				
3	X				
4		X			
5				X	
6			X		
7				X	
8		X			
9			X		
10	X				
11	X				
12			X		

Score _____

- Compare your scorecard with the official placing

Practice Website

http://www.animal.ufl.edu/Youth/poultry/candled_eggs/candledeggs.htm

- www.animal.ufl.edu
- Click on Youth Poultry Judging
- Click on Show Me How
- Click on Go to Main Practice Menu
- Click on Interior Egg Quality (candling)

Exterior Egg Quality



Created by Connie Page
Emanuel County Extension Agent
P.O. Box 770
129 N. Anderson Drive

April, 2006
Swainsboro, GA 30401
478-237-1226 FAX 478-237-8451
conniep@uga.edu

Exterior Egg Quality

- Stains
- Foreign Materials
- Appearance: shape, texture, soundness

Exterior Quality - Grade A

- Free from foreign material
- No easily visible stains / discolorations
- Excellent condition : Clean
- Practically normal shape
- Slight ridges permitted


Exterior Quality – Grade B

- Misshapen Shell
- Pronounced ridges or thin spots
- Free from adhering dirt
- Localized stain = $1/32$ egg surface
- Scattered stain = $1/16$ egg surface

Exterior Quality – Grade Dirty

- Any adhering dirt / foreign material
- Localized stain more than 1/32 egg surface
- Scattered stain more than 1/16 egg surface

Exterior Quality - Scorecard

CLASS H – EXTERIOR QUALITY 

Contestant's Number _____

Egg No.				Score
	A	B	Dirty	
1				
2				
3				
4				
5				
6				
7				
8				
9				
10				

Score _____

- Numbers run vertically
- Find the correct quality grade
- Place check in the row underneath the grade you choose
- Be sure that you do not have two checks in the same row

Practice



Grade B

Dirty

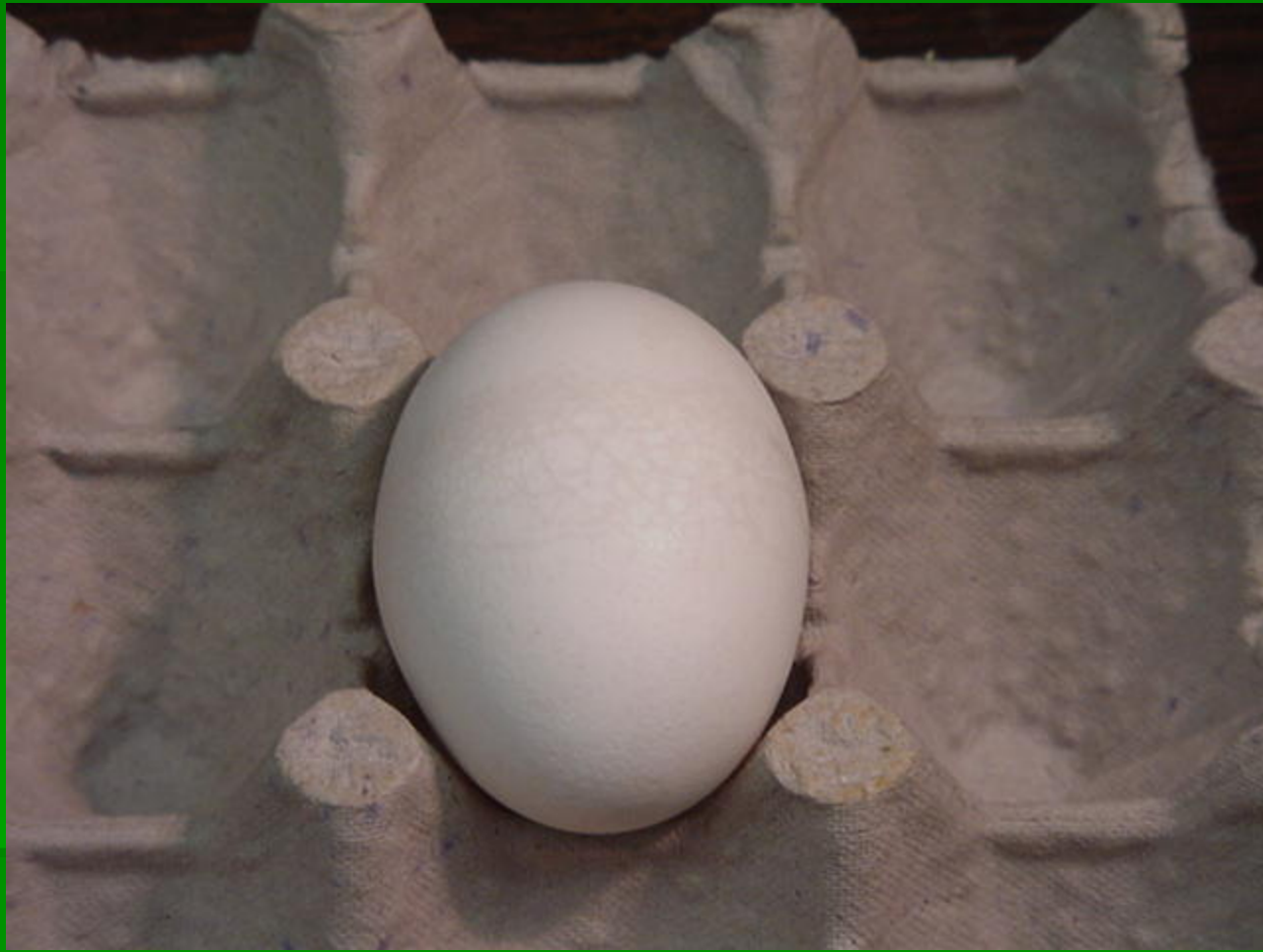




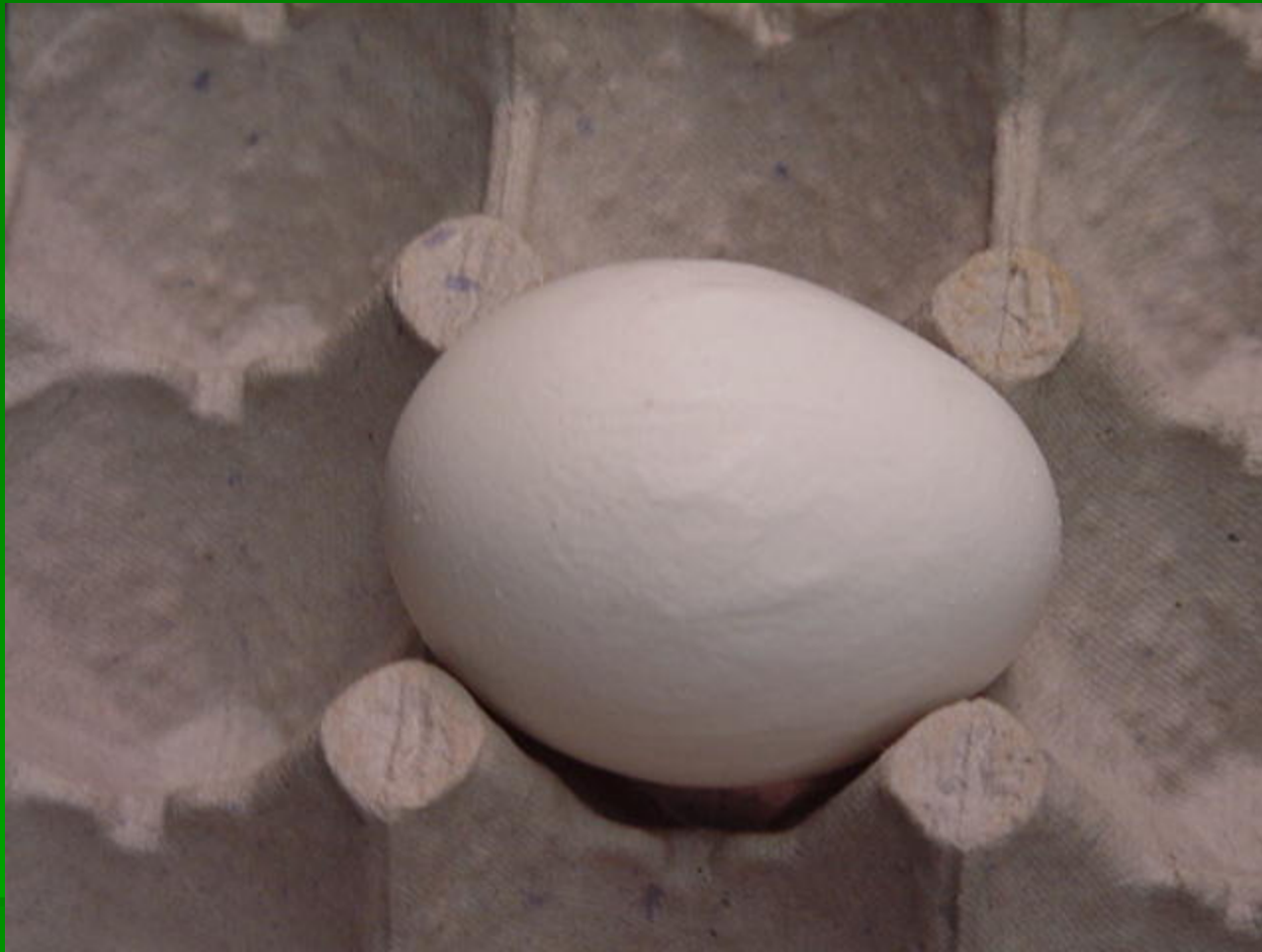
Grade A



Grade A



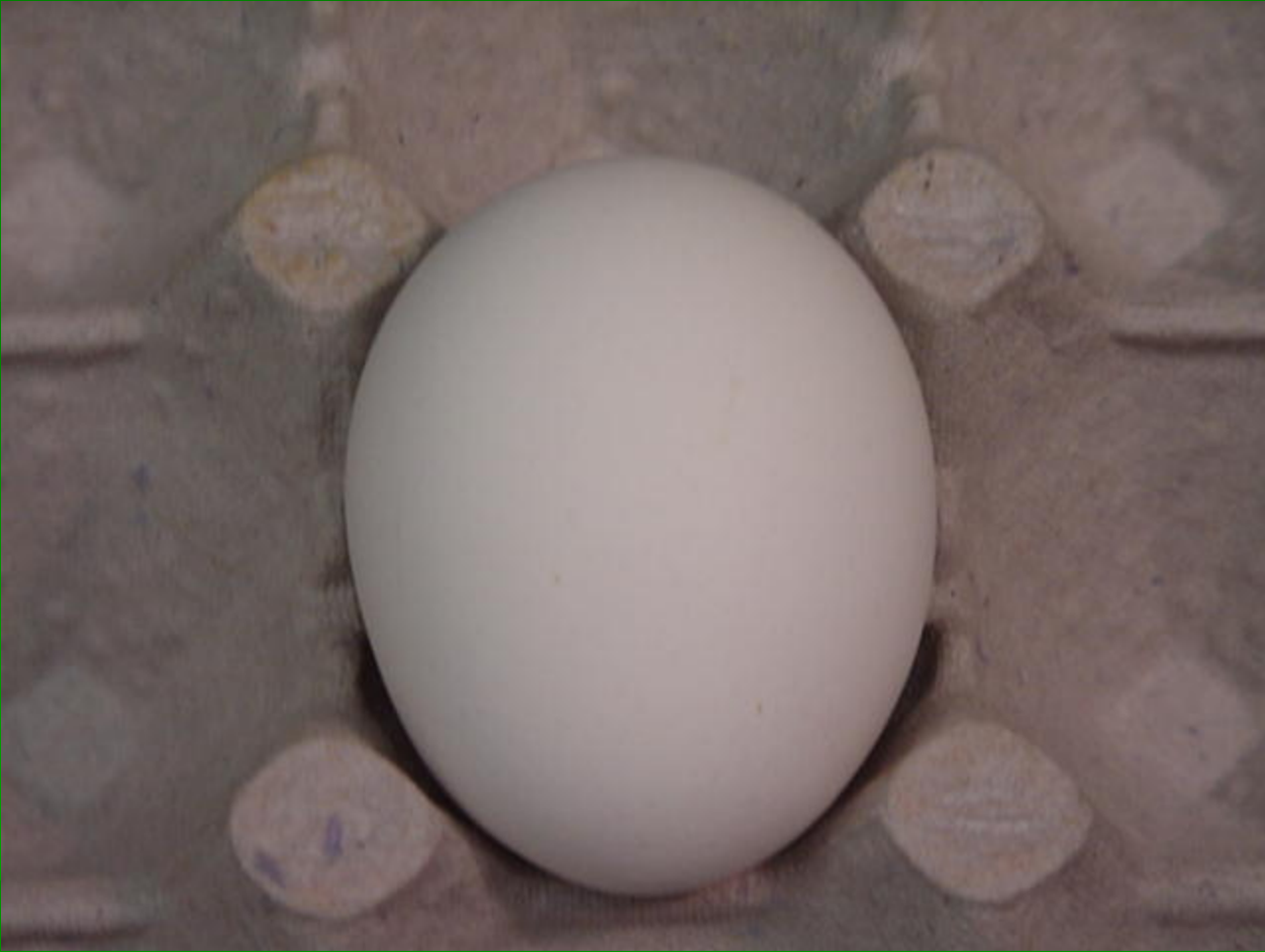
Grade B



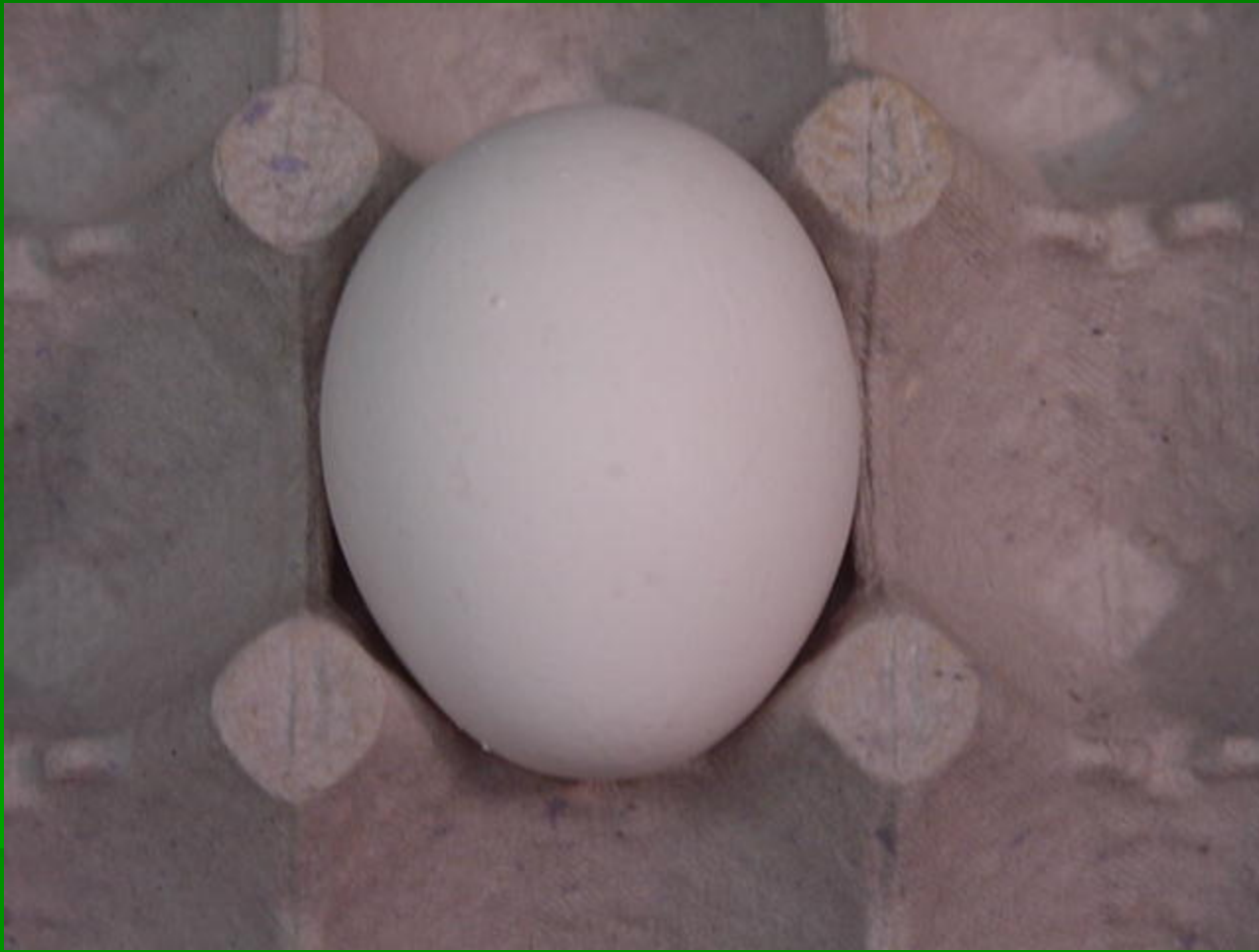
Grade B



Grade Dirty



Grade A



Grade A



Grade B

Exterior Quality - Scorecard

CLASS H – EXTERIOR QUALITY

8

Contestant's Number _____

Egg No.				Score
	A	B	Dirty	
1		X		
2			X	
3	X			
4	X			
5	X			
6		X		
7		X		
8			X	
9	X			
10	X			

Score _____

Compare your scorecard with the official placing

Practice Website

http://www.animal.ufl.edu/Youth/poultry/exterior_eggs/exterioreggs.htm

- www.animal.ufl.edu
- Click on Youth Poultry Judging
- Click on Show Me How
- Click on Go to Main Practice Menu
- Click on Exterior Egg Quality