



# Coweta Clover Connection

255 Pine Road | Newnan, Georgia 30263 | 770-254-2620  
Coweta.Extension@uga.edu | www.ugaextension.org/coweta



## September 2023

### 4-H BB Gun Team Registration

**OPEN TO 4<sup>th</sup> - 9<sup>th</sup> GRADERS**

Activity fee and additional information will be provided at the meeting.

*Must attend the Informational meeting:*  
**Thursday, September 28<sup>th</sup> at 6:30pm**  
at the Coweta Extension Office,  
255 Pine Road, Newnan



Shooting safety and hunter education will be the focus for the first 8 weeks. At the end of that time, try-outs and a test will determine this year's team.

*\*Limited Spots available\**  
Contact our office for more info



Come see us  
at the  
**Coweta County  
Fair!**

**September  
14<sup>th</sup> - 24<sup>th</sup>**



You can enter your homemade  
**CRAFTS, ARTWORK, PHOTOS,  
BAKED GOODS, & MORE!**



Check out all of the categories  
at [www.cowetacountyfair.net](http://www.cowetacountyfair.net)

## How do I get 4-H club points?



**Collect Pop Tabs**  
**Attend Coweta 4-H Events**  
**Signed Newsletters**

**Join a Coweta 4-H Specialty Club or Team**  
**Participate in Project Achievement**  
**Complete "Communicate/Evaluate"**

### Coweta 4-H Special Interest Clubs & Teams

- Ag Discovery Club (K-12<sup>th</sup>)
- Poultry Club (K-12<sup>th</sup>)
- BB Gun Team (4<sup>th</sup>-9<sup>th</sup>)
- K-9 Club (4<sup>th</sup>-12<sup>th</sup>)
- Horse & Pony Club (4<sup>th</sup>-12<sup>th</sup>)



Check our website for more information!  
[www.ugaextension.org/coweta](http://www.ugaextension.org/coweta)

Like us on Facebook at  
[www.facebook.com/coweta4h](http://www.facebook.com/coweta4h)

After parent/guardian and student have read this newsletter, sign and return to teacher.  
Additional 5 club points for completion of "Evaluate/Communicate" on reverse side.



Student's name: \_\_\_\_\_

Student's school: \_\_\_\_\_

Parent/Guardian's signature: \_\_\_\_\_

**5 CLUB POINTS**  
**September**  
**2023**

# 5th Grade 4-H Lesson #1

## Constructive & Destructive Forces

### Georgia's Barrier Islands



### Vocabulary

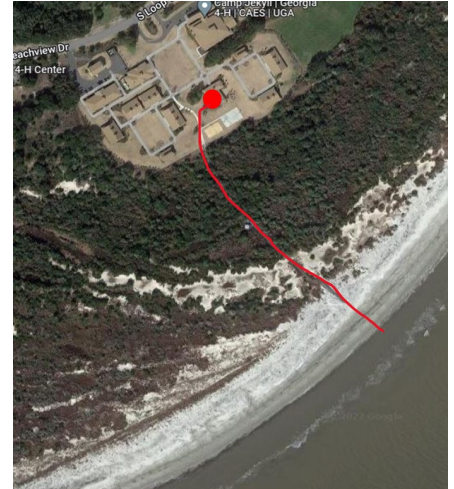
**Barrier Island** - a long, narrow strip of land that lies parallel to the mainland  
**Erosion** - the process of moving sediment by wind, water, or ice  
**Deposition** - process in which sediments, soil, and rocks are dropped or added to a landform or land mass  
**Constructive Force** - processes that build up Earth's surface  
**Destructive Force** - processes that break down Earth's surface  
**Weathering** - process of breaking up rocks into sediments; can be mechanical or chemical  
**Sand Dunes** - natural erosion control on the beach made from piles of sand and other vegetation  
**Sea Oats** - natural erosion control on the beach, the roots spread out in vertical runners and stabilize the dune



Camp Jekyll 1960



Camp Jekyll 1990



Camp Jekyll 2020

### 60 Years of Deposition on the South End of Jekyll Island, GA

The dots on the section of the island in each picture above are located on the same building.

**Evaluate/Communicate:** What differences do you see in the pictures of Camp Jekyll? How did the changes occur?

---



---



---



---



---



---